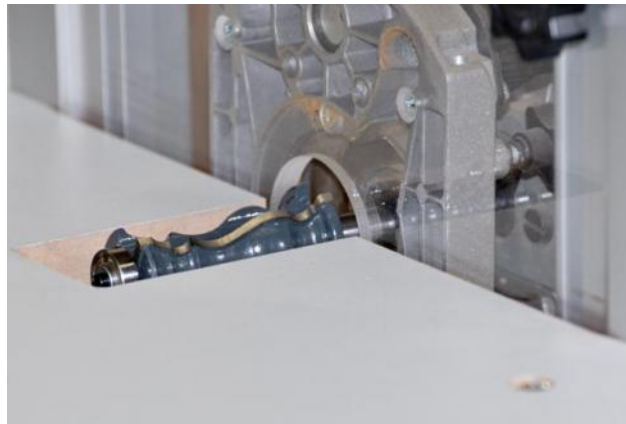




For customers who wish to use the Horizontal Router Table with router bits that have a cutting length greater than 2-1/8", you will need to increase the length of the bit opening in the router table top. Instructions on how to accomplish this task are below.

Please note that after the opening has been enlarged, when you are running stock that is narrower than the length of the opening, it is imperative that the stock be milled perfectly flat to avoid "snagging" on the out feed side of the table top.

### **Increasing the Opening Length in the MLCS Horizontal Router Table to use longer router bits:**



#### **Tools Needed:**

- Phillips Head Screwdriver
- 3/8" Drill Bit (preferably Brad Point)
- Hand Drill or Drill Press
- Jig saw or Band saw

1. The table top should be removed from the Horizontal Router Table to make the task of enlarging the opening easier when using hand tools and absolutely necessary if using stationary tools. Start the removal by removing the (8) cross head screws that secure the table top to the vertical table supports. (fig A.)



fig. A



fig. B

2. To complete the top removal, there are (2) cross head screws that secure each of the two the extension fence faces to the back edge of the table top. (fig. B)

3. Mark the outline of the enlarged table opening to show the cut lines for the saw cuts. We are lengthening our opening to 3-1/2" on our table top, you may choose a longer or shorter opening to fit your clearance needs. (see fig. C) Use a 3/8" drill bit to drill the corners to allow the saw blade to rotate when removing the material. (fig. D)



fig. C

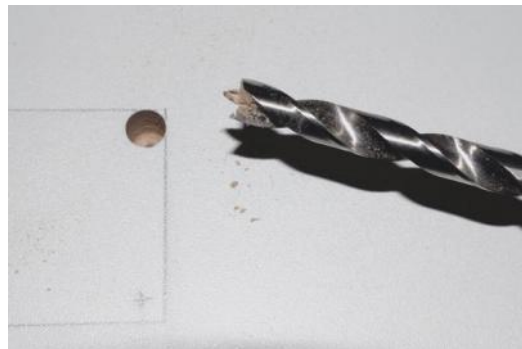


fig. D

4. Use a jig saw or band saw to cut out the material to create the enlarged table opening.  
(fig. E & F)



fig. E

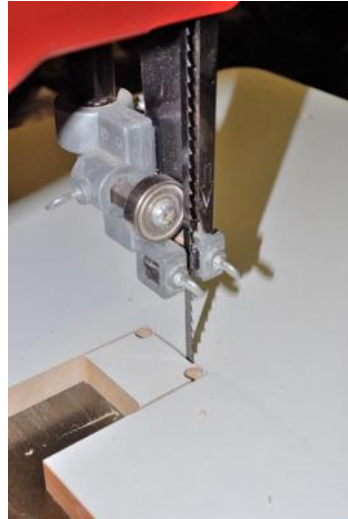


fig. F

5. Re-install the table top with the new enlarged opening by reversing steps 1 & 2. Your Horizontal Router Table is now ready to be used with longer router bits.